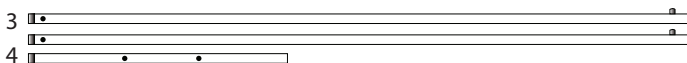


Half Wall Stabilizing Bar

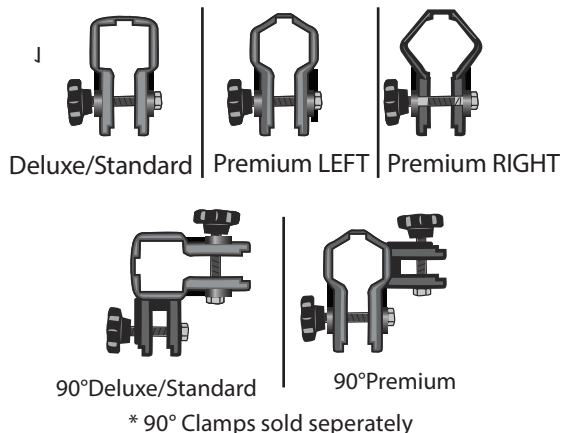
Product Parts

- 1 - Molded Plastic Clamps (see options) qty: (see chart to right)
- 2 - Bolt Handle qty: (see chart to right)
- 3 - Long Bar qty: 2
- 4 - Short Bar qty: 1



* Walls sold seperately or as kits

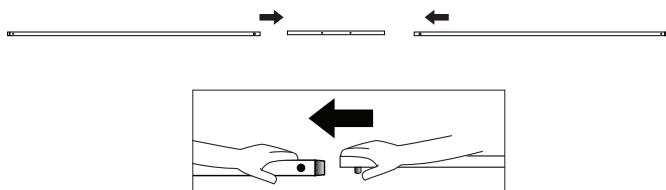
Clamp Options



Assembly

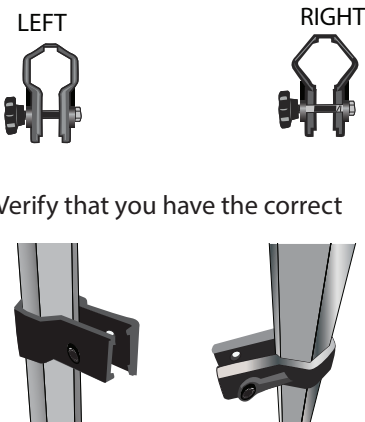
Step 1

Insert end of Long Bar (3), while pushing down the button, into one end of the Short Bar (4). Verify that the release button clicks into place. Repeat for other end. NOTE: the button will be on the underside of your stabilizing bar.



Step 2 NOTE:

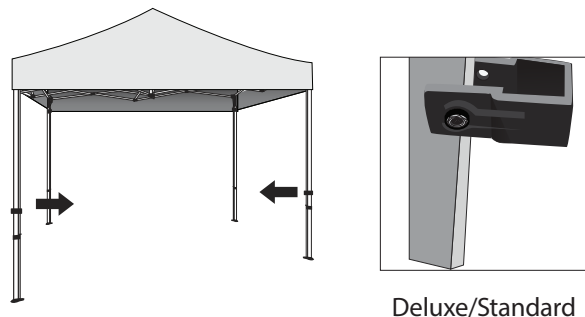
Please note: The premium tent Molded Plastic Clamps (1) are molded to ensure the correct fit around the hexagon tent leg. Verify that you have the correct Clamp on the correct tent leg.



Step 2

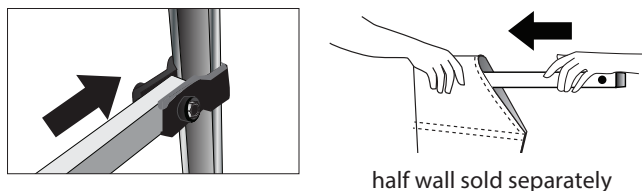
On existing tent frame, place one of the Molded Plastic Clamps (1) around the leg. The open end of the Molded Plastic Clamp (1) should face towards the other tent leg you want the stabilizing bar to span. Clamp threaded inserts should face toward inside of tent***

Repeat for opposite tent leg. (See Step 2 note for Premium tent)



Step 3

Insert one end of the stabilizing bar (created in Step 1) into one of the Molded Plastic Clamp (1) (If you have a tent half wall make sure to install it before you insert bar into Clamp)

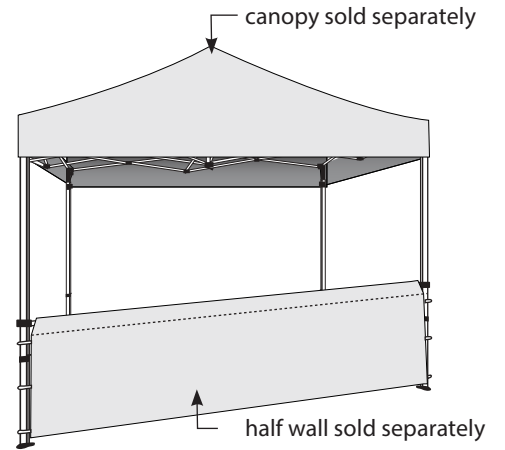
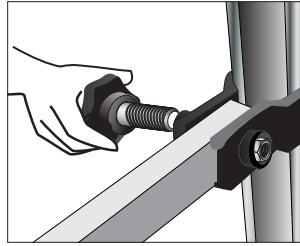


half wall sold separately

Assembly Continued

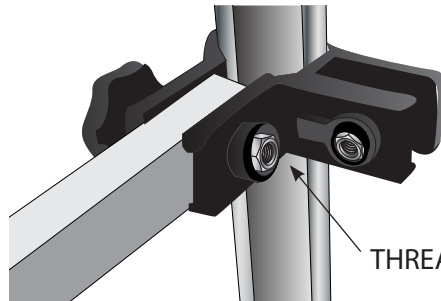
Step 4

Insert Bolt Handle (2) through the hole on the Molded Plastic Clamp and the stabilizing bar. Secure to the threaded insert on the Molded Plastic Clamp. Repeat on other leg.



INSTALL NOTE

*** Make sure threaded insert faces toward inside of the tent.



* Clamp shown is optional 90° Clamps (sold separately)

Storage and Care

Step 1

Wipe clean with a damp cloth. Store in a cool, dry place.